

**Development of form factor function for
National Regional State, Ethiopia**

in eastern Amhara



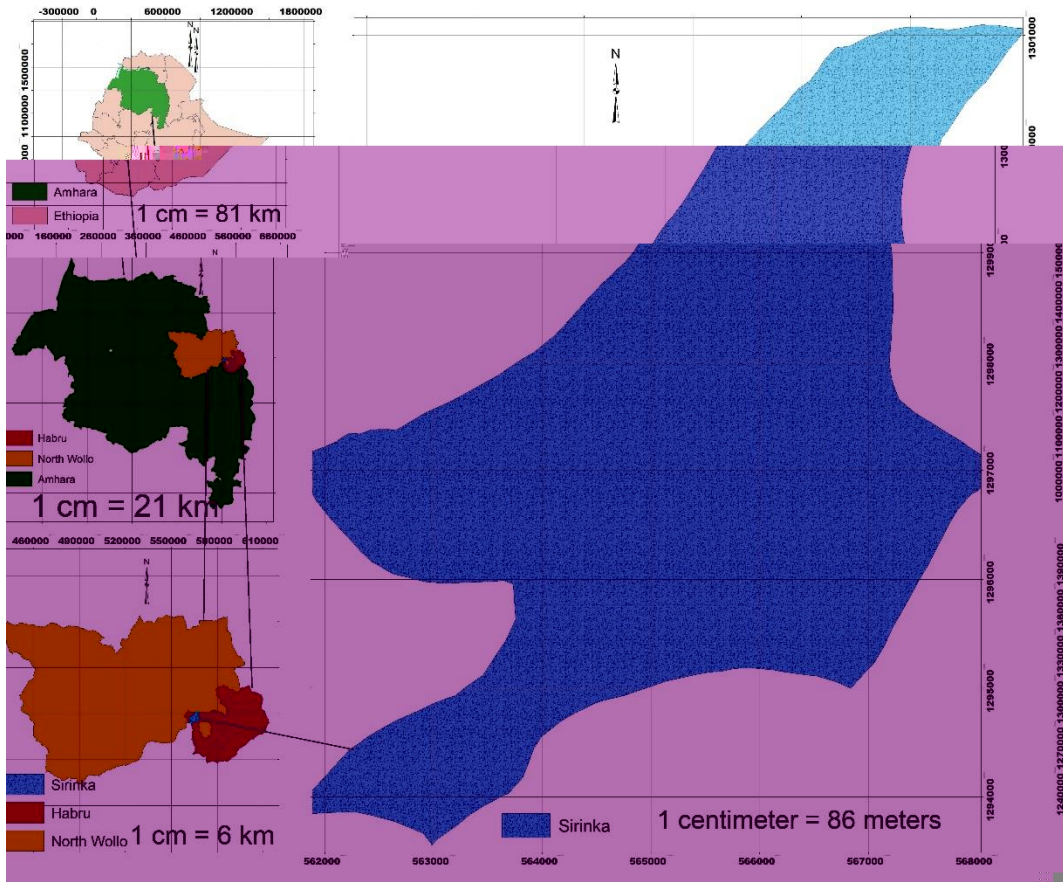
m

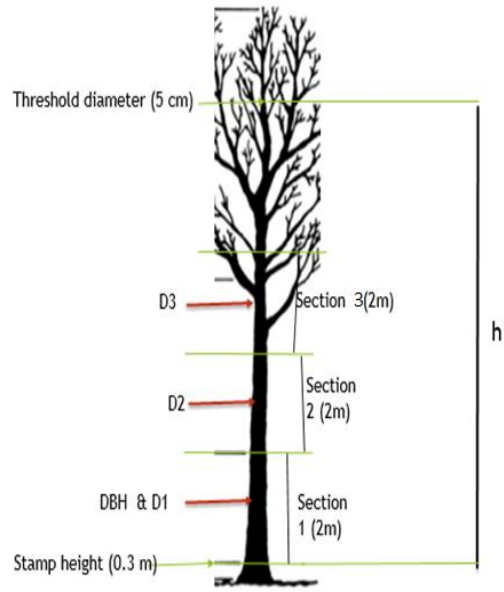
m

m

m

m





$$V = (\text{DBH}^2 * \pi) * H$$

$$V_i = \frac{(DBH_i^2 * \pi)}{4} * H_i$$

4

$$f = \frac{\sum V_i}{V_{cylinder}}$$

m

H o c *n FD* —
— — — —

H o c *c* $\frac{\text{—}}{FD}$ — $\frac{\text{—}}{FD}$

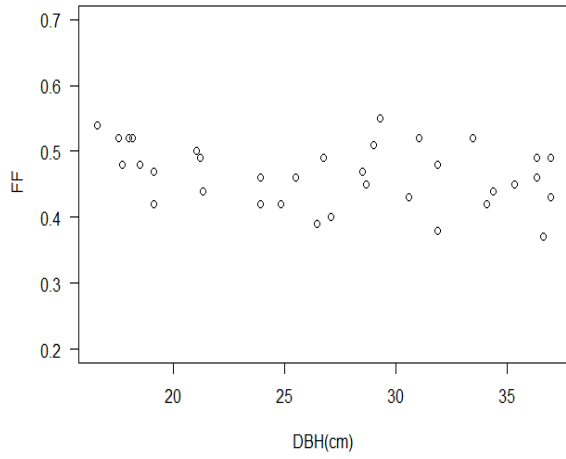
H o c *c* — — —

c $\frac{\text{—}}{FD}$ $\frac{\text{—}}{FD}$ $\frac{\text{—}}{FD}$ —
 $\frac{\text{—}}{FD}$

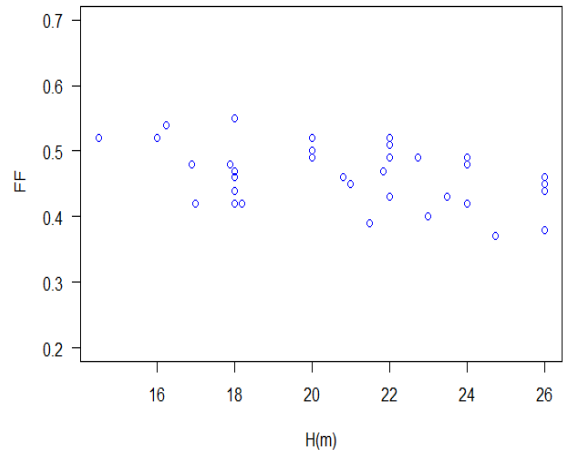
n *c* *n FD* *n*

E *F*

Data used for model calibration



Data used for model calibration

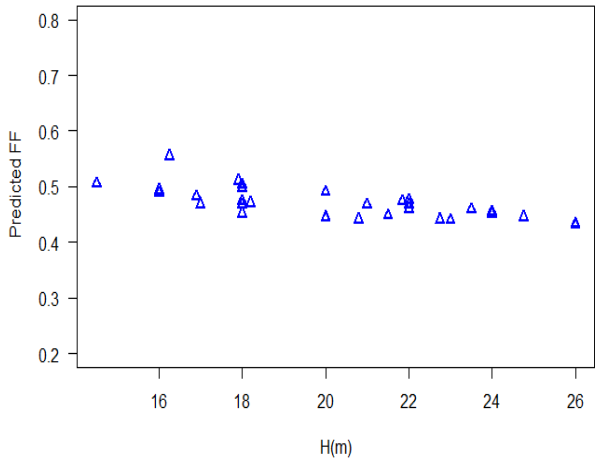
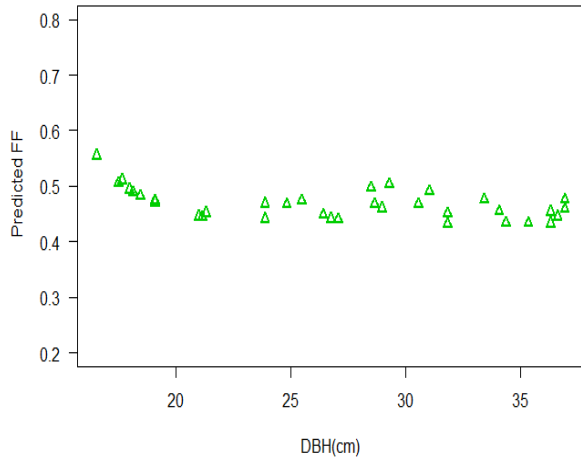
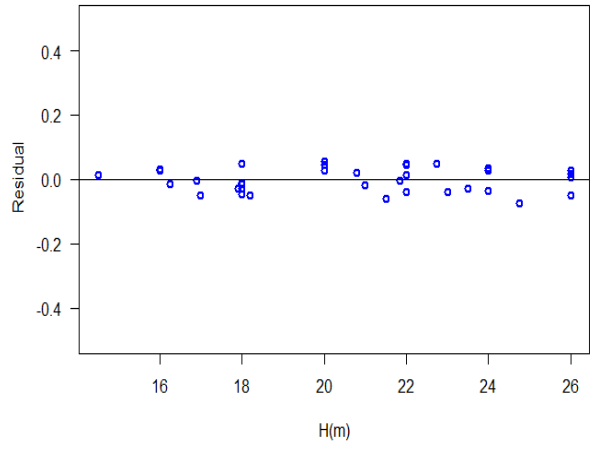
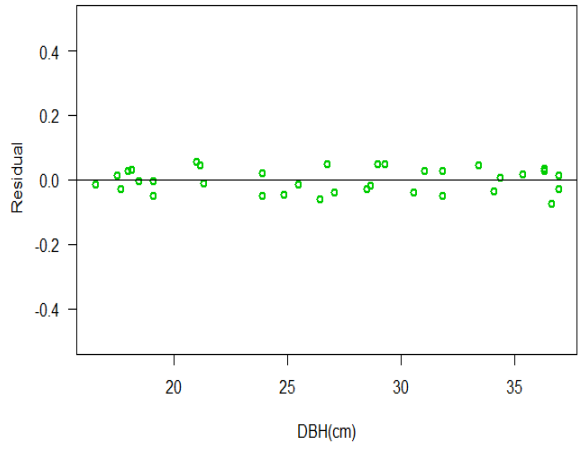


m

m

m

m



m

j j j j m ffk j j j ffk 6 ffk

Cj

jm jm j j

Cj

Fj

j

Cj

Fj j Cj

Cj j j

jm j j ffk m j j j

m m m
Cj j j

j j m j Cj
j j

j ffk j j j Cj ffk

j j

ffk

gj j j

F Cj

Cj

j Fj j Cj ffk

Cj j j

jm Fj j Cj ffk