

L f d d d d  
*vesicarium*

d  
*Allium cepa L.*

*Stemphylium*

E E

E E E M



E

f

f

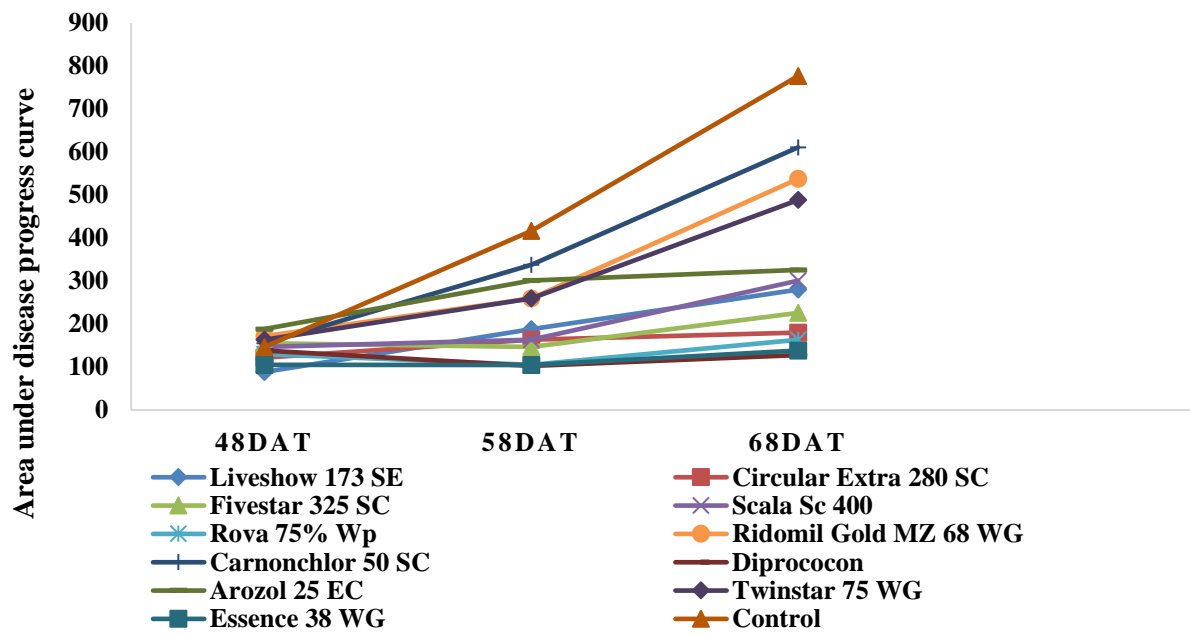
L

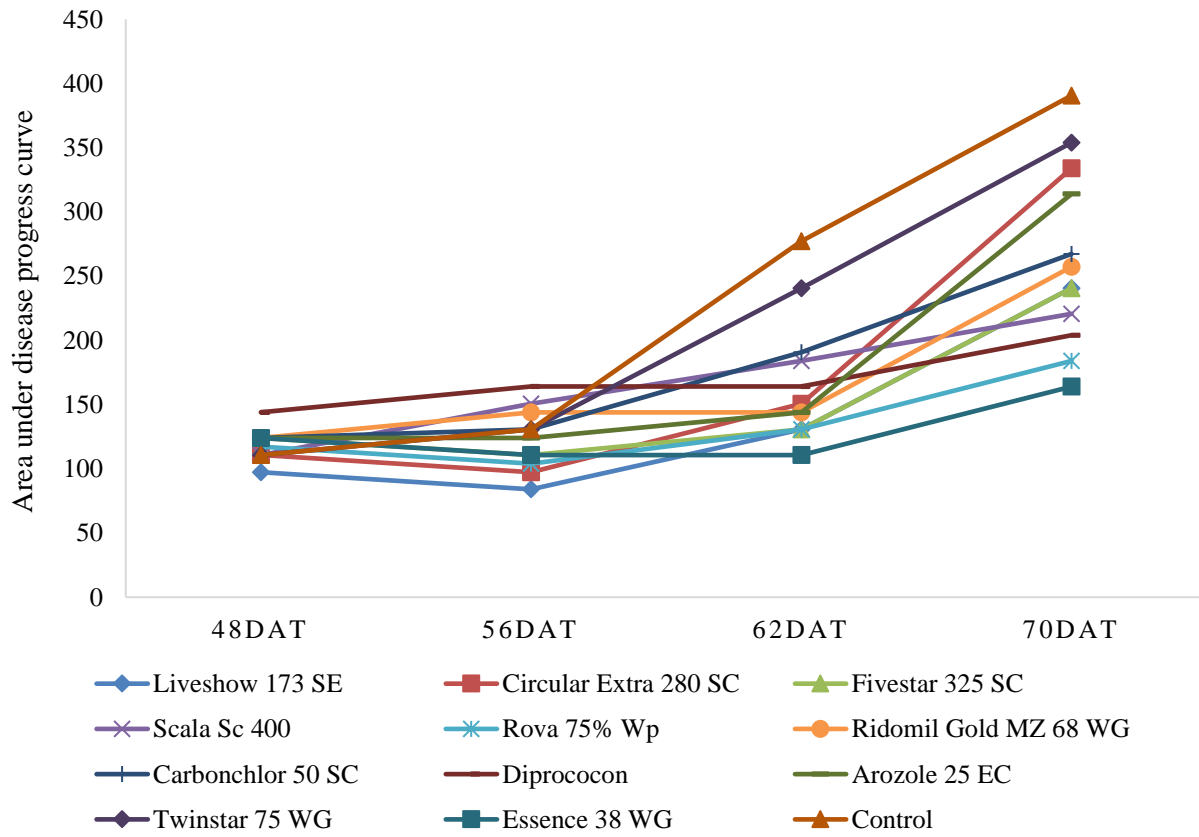
f

d

d			E	
	d	d		d
	d	d	d	d
	d f	d	d	d f
	d f	d	d f	d f
	d f	d	d	d f
	f	d	f	d f
	f	d	f	f
		d	f	f
		d		d f
		d		d f
		d		f

d





d

d

Fungicide	2020				2021			
	Rate	SE of rate	SE of intercept	R <sup>2</sup> (%)	Rate	SE of rate	SE of intercept	R <sup>2</sup> (%)
Liveshow 173 SE	0.7	0.102	-19.8	82.52	0.564	0.183	-10.3	91.42
Circular Extra 280 SC	0.163	0.128	12.19	92.13	0.867	0.196	-25.9	90.05
Fivestar 325 SC	0.287	0.263	6.6	91.10	0.485	0.163	-4.1	80.34
Scala Sc 400	0.53	0.215	-6.2	86.37	0.414	0.182	1.0	82.46
Rova 75% Wp	0.128	0.188	13.6	73.40	0.232	0.154	8.74	86.14
Ridomil Gold MZ 68 WG	1.068	0.295	-31.8	65.56	0.714	0.13	-14.68	81.69
Carnonchlor 50 SC	1.29	0.436	-44.2	62.46	0.497	0.196	-3.5	80.33
Diprocon	0.025	0.165	22.4	80.23	0.284	0.109	9.5	87.34
Arozol 25 EC	0.322	0.225	9.5	71.03	0.777	0.177	-19.6	79.56
Twinstar 75 WG	0.878	0.216	-21.6	62.22	0.824	0.178	-21.2	92.34
Essence 38 WG	0.128	0.122	11.9	90.00	0.196	0.105	11.64	91.12
Control	1.802	0.255	-71.3	83.33	0.894	0.195	-24.5	85.61

**d**

**E f d**

**d**

**d**

<b>d</b>	<b>d df d</b>		<b>f</b>	
	<b>d</b>		<b>d</b>	<b>f</b>



	d		d	f
	d			f
	d f		d	f
	d f		d	f
	d f		d	f
	d f		d	f
	d f		d	d f
	f		d	d f
	f		d	d
	f		d	f
	f		d	d

E

E

E

L