

R □ D

□ R □

The diagram consists of a grid of symbols. The symbols are arranged in a roughly rectangular shape, with some symbols missing or faded. The symbols include:

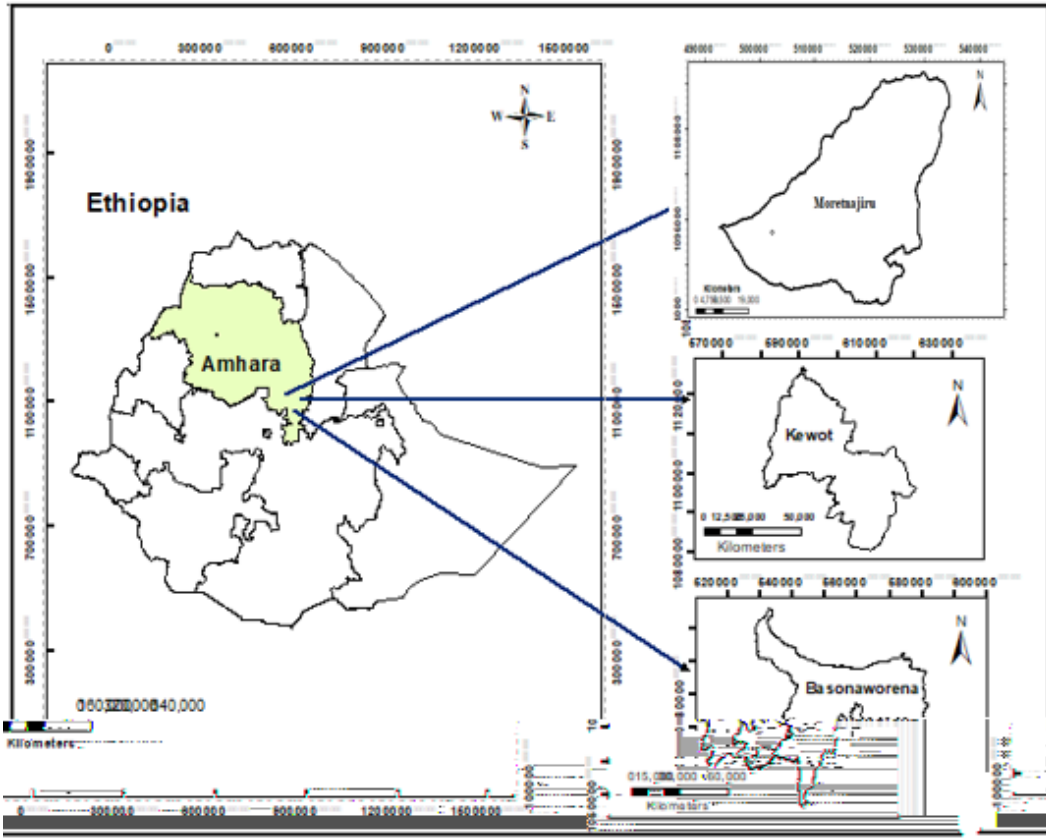
- U**: Numerous instances of the letter 'U' scattered throughout the grid.
- J**: Vertical bars with a hook at the bottom, resembling the letter 'J', scattered throughout the grid.
- BU**: A pair of symbols 'BU' located in the middle-right section of the grid.
- Q**: A single instance of the letter 'Q' located on the left side of the grid.

The symbols are arranged in a way that suggests a pattern or a sequence, but the overall structure is complex and difficult to decipher without additional context.

T

2 D 2 R 2 D R

R R



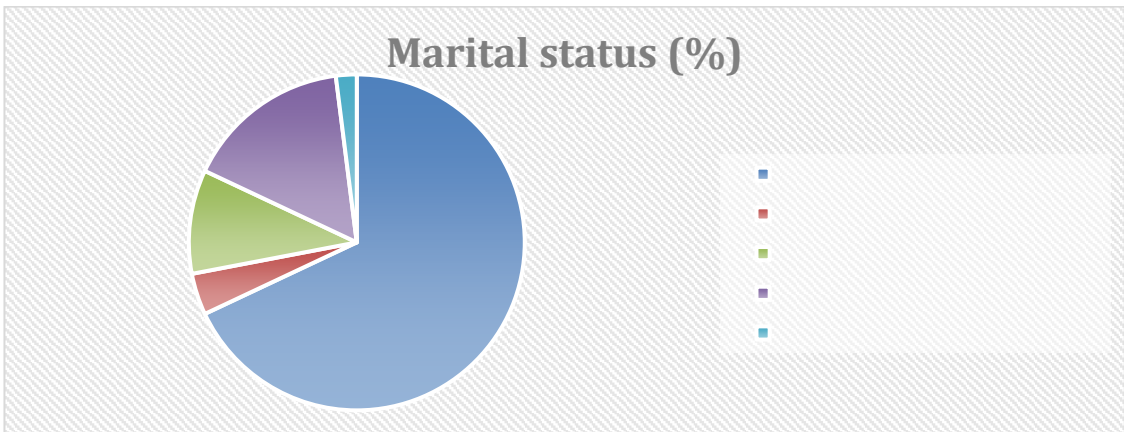
Source Abiro et al (2017)

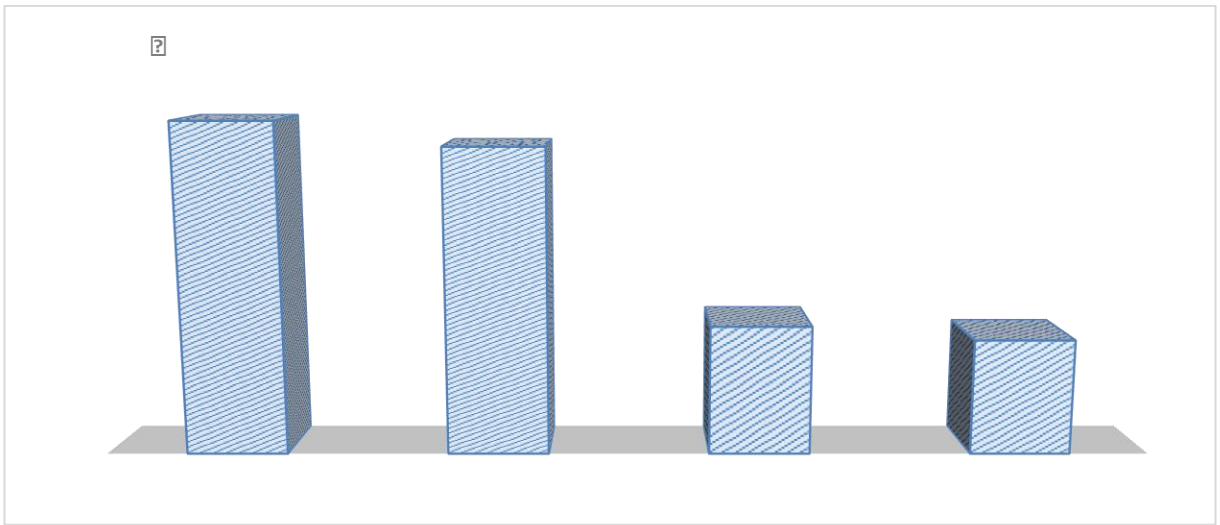
?

DRT R? R TRR

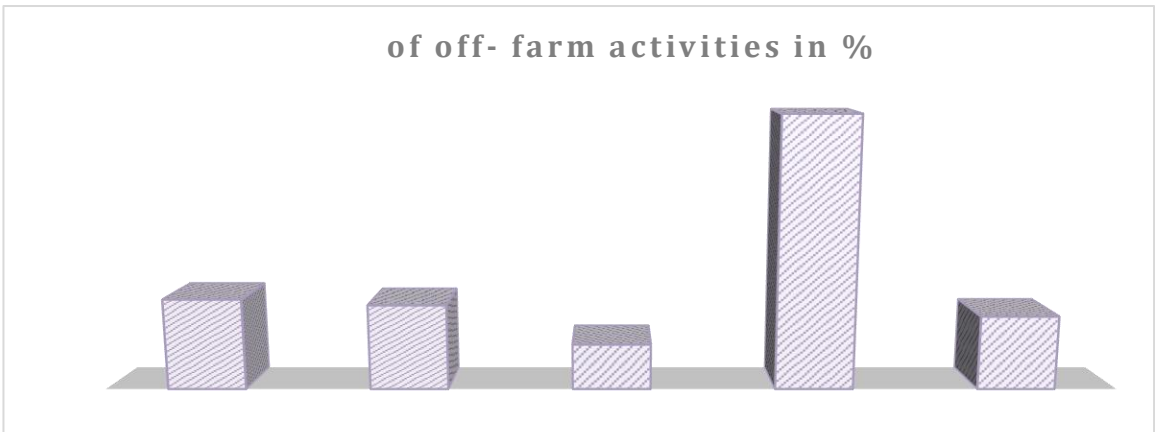
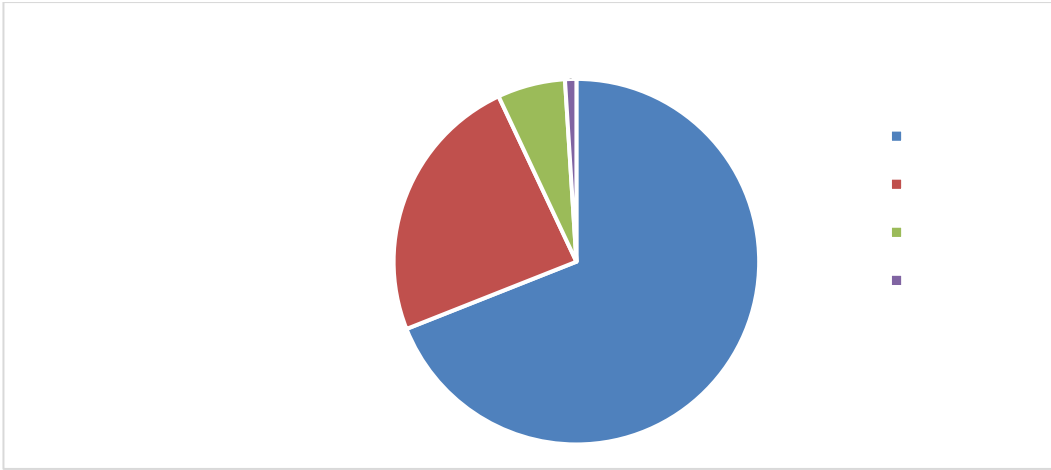
Variables	Mean	Err.	[95% Conf. Interval]
-----------	------	------	----------------------

Variables	Mean	Err.	[95% Conf. Interval]
Male members involved in agriculture	1.85	0.08	1.68- 2.02
The female family participated in agriculture	1.55	0.07	1.41-1.69
Average family size	5.40	0.11	5.18- 5.61
The average level of formal education in years	2.52	0.25	2.04- 3.01
Years of experience in agriculture	20.14	0.65	18.86- 21.42
Respondents agricultural labor contribution	52.81	2.16	48.54- 57.08
Second family member agricultural labor contribution	73.86	2.46	69.00- 78.72
Third family members' agricultural labor contribution	26.91	2.49	21.99- 31.84
Fourth family members' agricultural labor contribution	15.19	1.82	11.59- 18.78





?



U J		
J U J		
U U U U	U U	U U

Table 5: Factors affecting the participation of women in agricultural activities

Variables	Coef.	z	P>z
Age	-0.39 (0.00)	-1.96	0.05**
Marital status	11.73 (2.28)	5.14	0.00***
Level of education in years	-1.28 (0.84)	-1.52	0.129
Family size	-0.65 (1.71)	-0.04	0.97
Media access	1.68 (1.60)	1.05	0.294
Number of years living in the village	0.39 (0.24)	1.62	0.105
Relatives relayed on critical issues	-0.31 (0.26)	-1.19	0.235
Non-relatives relayed on critical issues	1.62 (0.59)	2.77	0.01***

TR

☐ D D

D D D DR

U U U
K Q KU
JJ JJ JJ JJ

Q U U
JJ U JJ

JJ U K JJ JJ U JJ U JJ U U

JJ U JJ U

JJ U JJ Q
JJ U JJ U U

Q

U

J J U U J

J U U U U

J U