

Mulugeta Alemayehu^{1*}, Yihenew Awoke² and Daniel Tilahun¹

Corresponding author email: almulugeta23@yahoo.com

Teff, a staple food for most Ethiopians, is first in area coverage and second in total annual production next to maize. Its productivity is low compared to other cereals grown in the country partly because of less or ineffective promotion and dissemination of new teff varieties. Therefore, this activity was conducted in Libokemkem and Ebenat woredas of South Gondar Zone of the Amhara region, Ethiopia with the objectives of identifying teff variety selection criteria for use in future variety development, increasing farmers' awareness and their access to improved teff varieties, enabling farmers to assess the performance of improved teff varieties with their production package, and accelerating the dissemination of farmers preferred varieties in teff growing potential woredas of the region. The woredas were selected purposively, as they were intervention areas of the Norwegian Forestry Group/Forest Landscape Restoration Program, which is a stakeholder to ARARI and the need to acquaint farmers with recently released teff varieties. Twenty-five FREGs members and 6 interested and committed host farmers from each woreda were selected to undertake the trial on their farm plots. Two improved teff varieties: Hiber-1, and Etsub, and a local check (CR-37) were used in the trial. Farmers in the two woredas set their own evaluation and selection criteria and ranked them in order of importance using the pair-wise ranking method. Thus, based on the overall evaluation and selection criteria farmers in Libokemkem selected Hiber-1 while in Ebenat woreda they selected Etsub teff variety as their 1st choice. However, in the two woredas, Cr-37 was selected by farmers as their second choice next to Hiber-1, and Etsub which gave a mean grain yield of 1.73, and 1.6 t ha⁻¹, in Libokemkem and Ebenat woreda, respectively. Hiber-1 variety gave a yield advantage of 15.3% in Libokemkem, while Etsub in Ebenat woreda gave a yield advantage of 14.3% over the local check. Therefore, since the two varieties were selected by farmers because of their quality, dry biomass yield, and yield advantage, it is worthwhile to scale up them in the woredas and other similar agro-ecologies of South Gondar Zone to ensure increased income, food, and nutrition security of the rural households.

Teff

teff

Teff

Teff

teff

Teff

teff

teff

teff

teff

teff

tela

katikala

Teff

teff

teff

teff

Meher

teff

teff

teff varieties

teff

teff

woredas

teff varieties

teff

teff

woredas
teff

teff

teff

woredas

teff

teff

woreda,

woredas

woreda

woredas
woreda

woreda
woredas

woreda

woreda

woreda

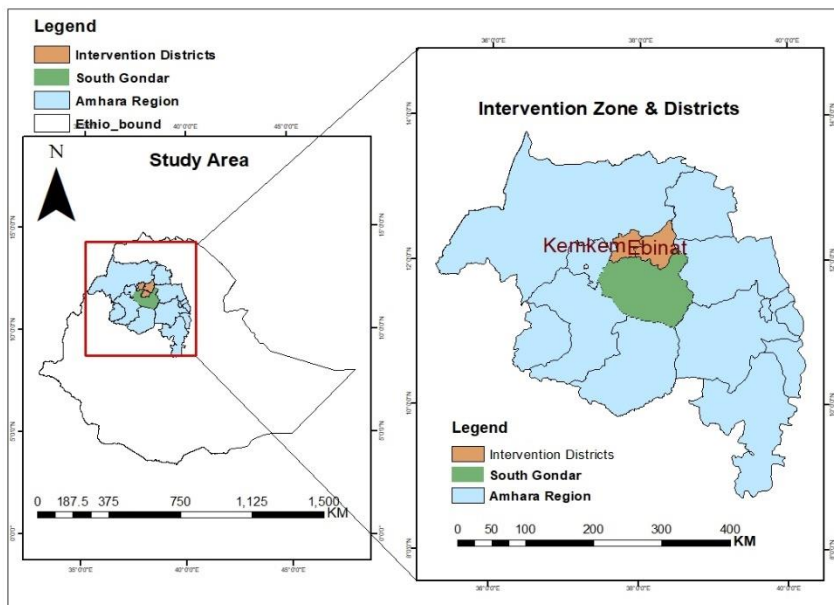
woreda

woreda

teff
woreda

teff

Woreda



Woredas

teff

teff

Woreda

*Kebele
teff*

teff

•

Woreda

Kebele

•

•

•

teff

•

•

•

*Woreda
Kebele*

•

•

•

•

•

•

•

•

-

-

-

-

-

-

-

teff

-

-

kebele

teff

teff

Etsub, and Hiber-1,

Tsedey/

teff

Etsub, and Hiber-1,

Tsedey/

woreda kebele

teff

varieties

teff

kebele

teff

teff

teff

teff

teff

Woreda

Kebele

kebele

teff

teff

$$r_s = 1 - \frac{6 \sum d^2}{n(n^2 - 1)}$$

r_s

Etsub

Hibre-1

teff
woredas

Etsub

teff

teff

Hiber-1

Etsub

woredas,

Tsedey

woreda

Hiber-1

Etsub

and 90%

Hiber-1

woredas

woredas.

Hiber-1

Hiber-1

Etsub variety.

Hiber-1

Etsub

woreda

Tsedey

Etsub

woredas

woredas

Tsedey

teff

wozam)

teff

woreda

Esub
Hiber-1
Tsedey

teff v

Esub
Tsedey
Hiber-
1

woreda

teff

Hibre-1

woreda
Esub

Hibre-1 Tsedey teff

Hiber-1

woreda

Esub

woreda

teff

teff

teff

Woreda

--	--	--

Hiber-1

Tsedey

Hiber-1. Hiber-1

Etsub teff

teff

woreda

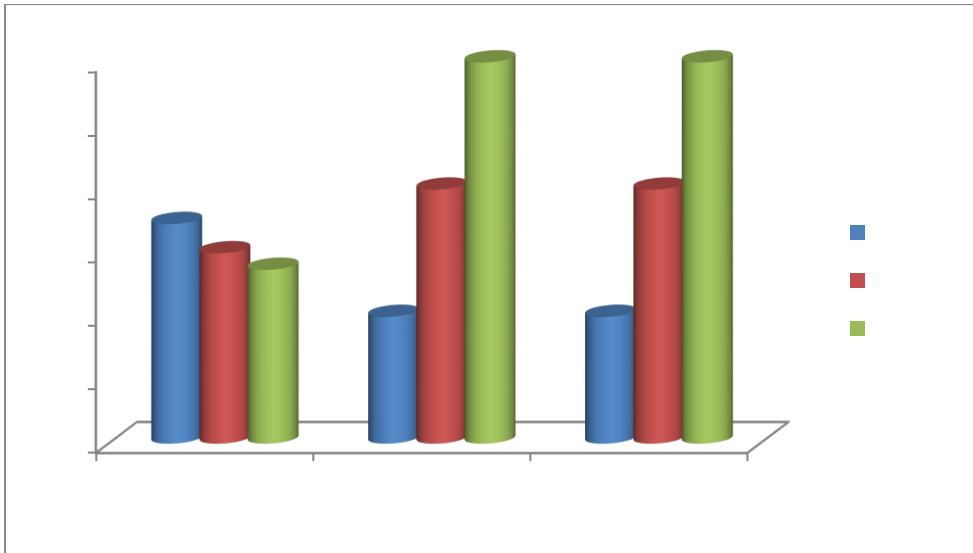
Hiber-1

Estub

Hiber-1

Hiber-1

Etsub



woreda

teff

teff

woreda

teff

woreda

Hiber-1

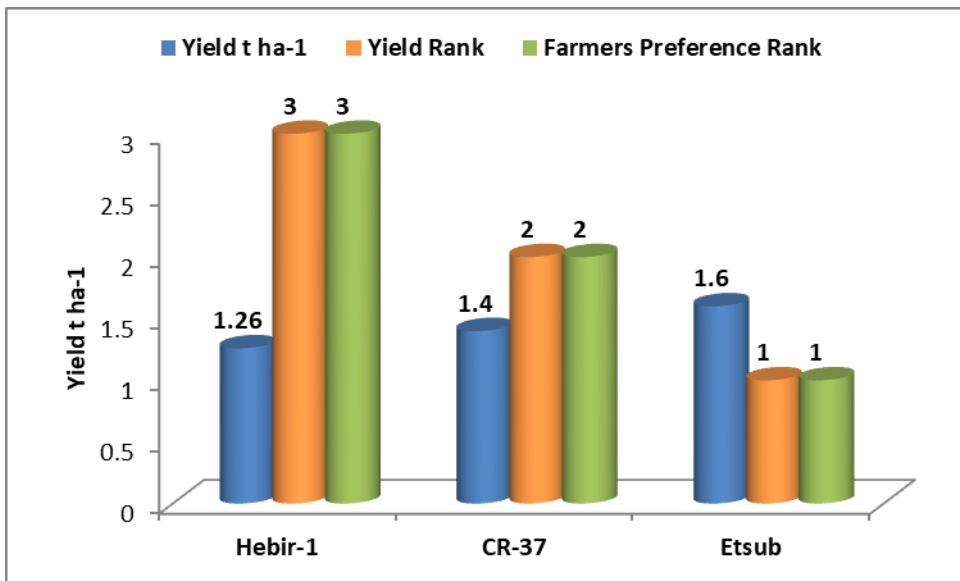
Etsub

teff Etsub
 Etsub Hiber-1 teff
 woreda Etsub
 woreda Etsub



teff

Etsub Hiber-1
 Etsub
 Hiber-1 Etsub teff



Esub
Hiber-1
Tsedey

Hiber-1

Hiber-1

teff varieties

woreda

Esub

Hiber-1

Esub

Cr-37

woreda

Hiber-

teff variety

Etsub

teff

woreda

Etsub

Hiber-1

*Etsub
woredas*

Hiber-1

teff

teff

woredas

Hiber-1

Etsub teff

Tsedey

Etsub

*woredas
woredas*

teff

teff

wozam

Hiber-1

Etsub

woredas
Woreda Tsedey
Etsub, Woreda Etsub Tsedey
Hiber-1 Hiber-1 teff
Hiber-1 Tsedey
woreda Etsub Tsedey
woreda woredas
woredas
Etsub Hiber-1
woredas

woredas

woreda

Kebele

woreda

kebele

woreda

Kebele

woreda

kebele

woreda

kebele

woredas.

teff

teff

woredas teff

Esub Tsedey/ teff woreda, Tsedey

woreda Esub Hiber-1

teff teff

teff

teff

teff

teff

woredas

teff

teff woredas

-
-
- As Hiber-1 Tsedey Esub Tsedey woredas
-

woredas

